

WHAT IS YOUR

VISION

FOR CHATTANOOGA'S PARKS AND OUTDOORS?



Learn more about the state of Chattanooga's parks and outdoors and
take the online survey: www.chattanoogaparksandoutdoorsplan.com



WELCOME!

PRESENTATION AGENDA

- 1. Why We're Here**
- 2. What We've Learned**
- 3. POP Vision and Big Ideas**
- 4. Next Steps**

What do Plans Do?

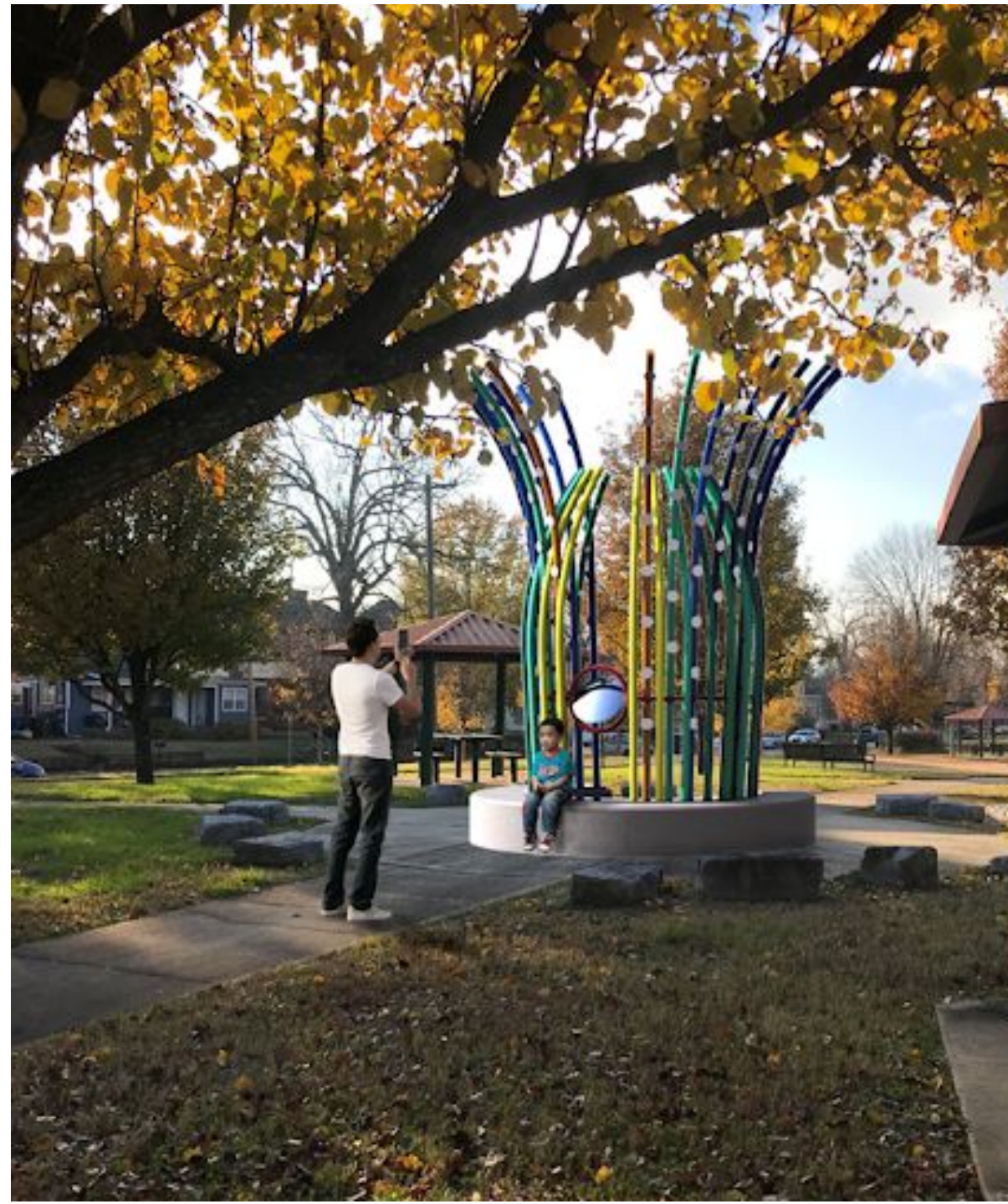
Plans guide the how, when and where new development, reinvestment and preservation should occur. The POP...

- **Serves as a general policy guide**
- **Provides a set of strategies for achieving specific goals**
- **Does not guarantee funding for improvements**
- **Is not regulatory or legally binding**

STATE OF OUR PARKS



**WHAT IF WE GET IT
RIGHT?**



WHAT WE'VE LEARNED

EXISTING PARKS & GREENWAYS

Chattanooga a Today*

6.0
park acres per
1,000 residents

National Average**

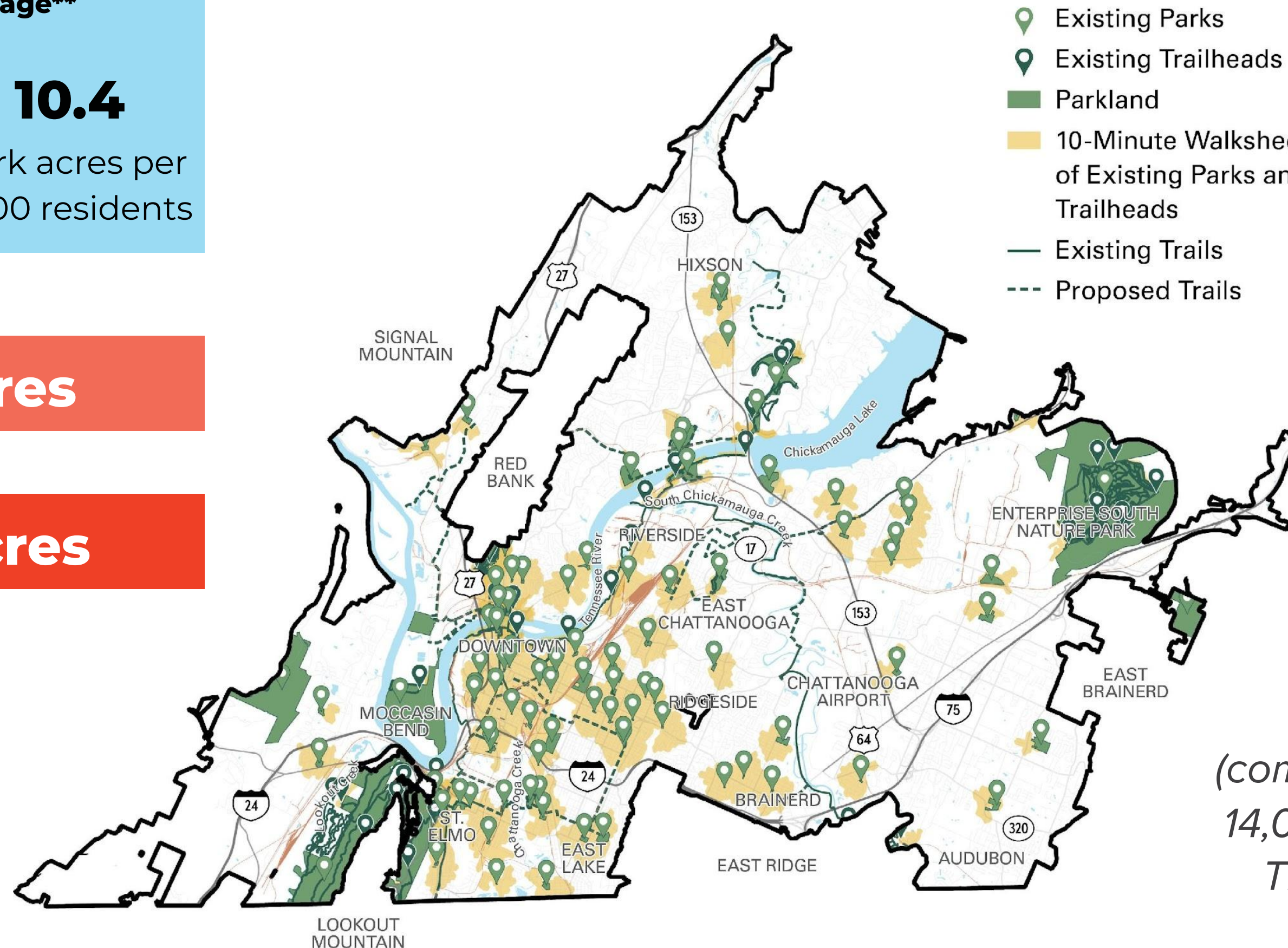
10.4
park acres per
1,000 residents

How to fill the gap today?

+644 acres

How to fill the gap in 2050***

+1,423 acres



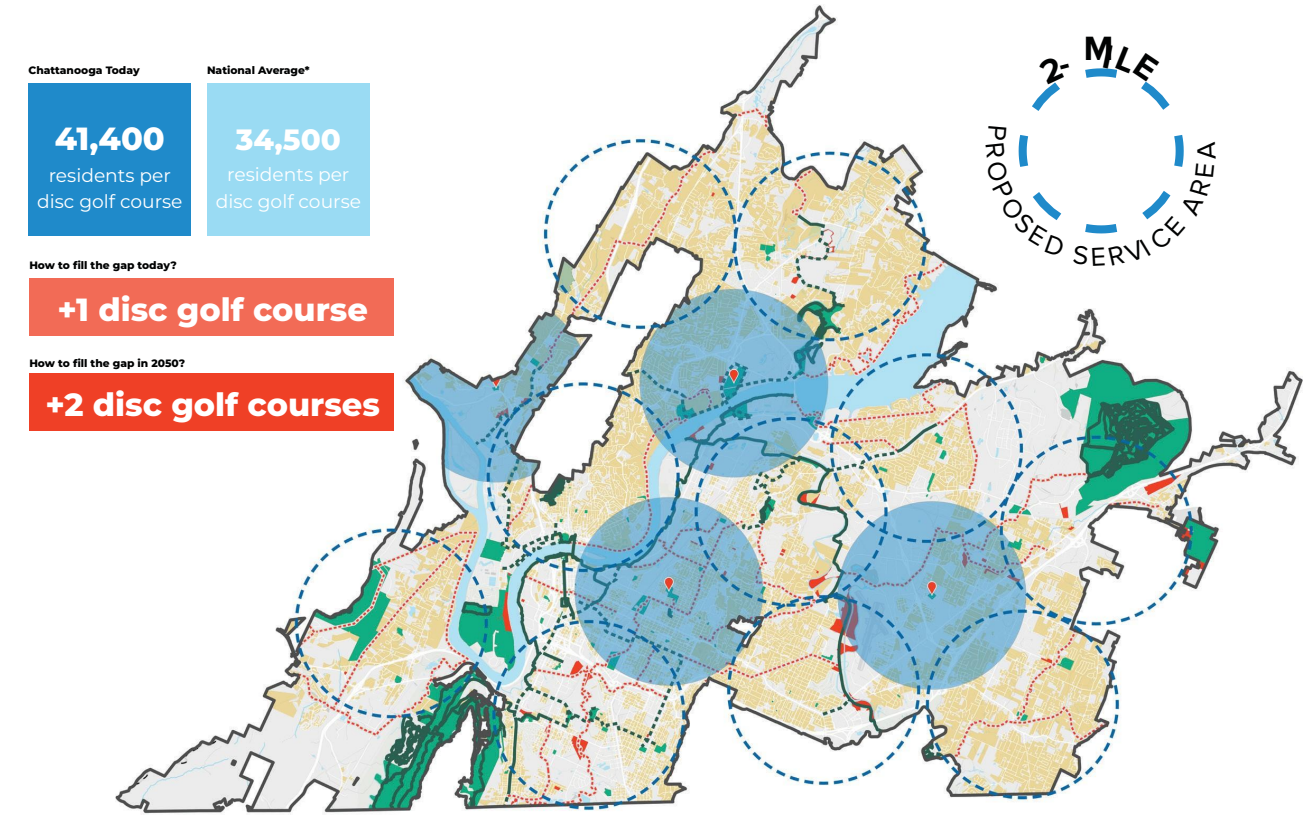
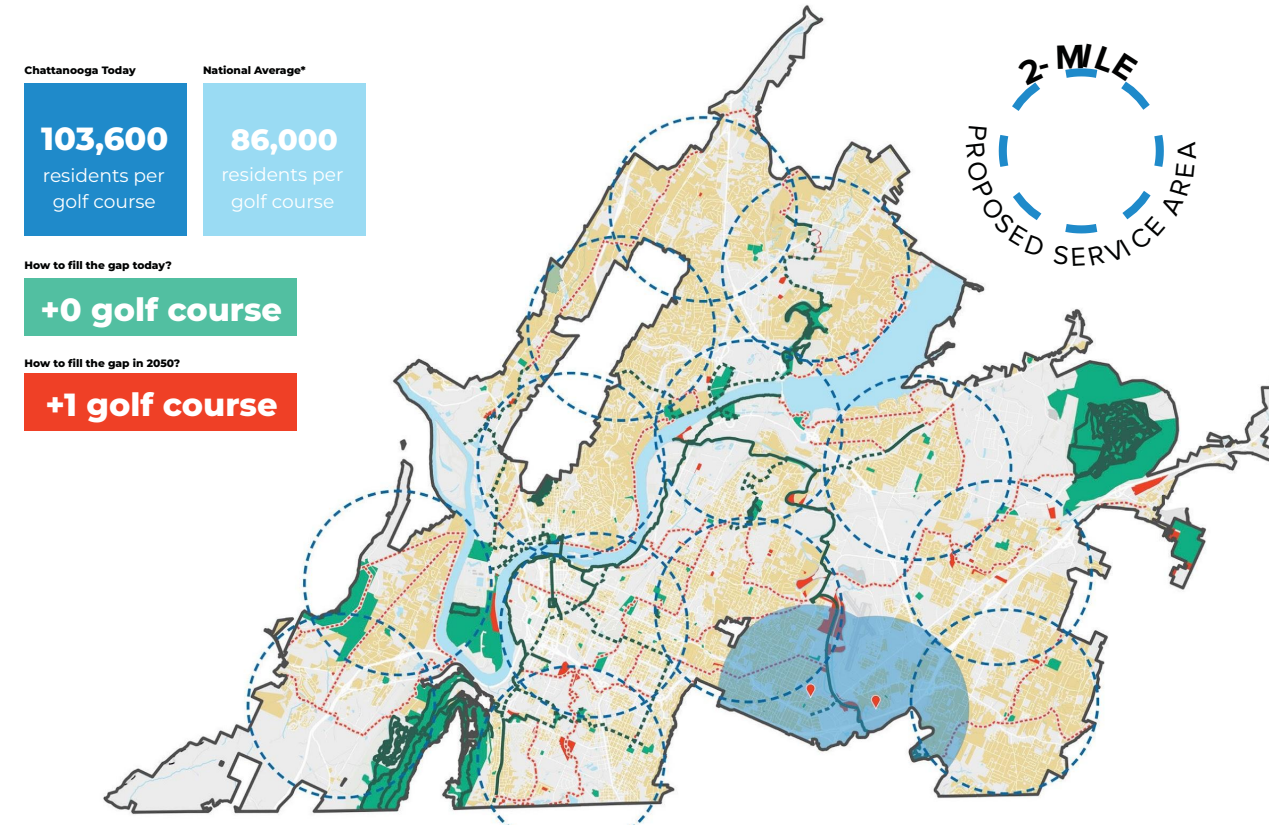
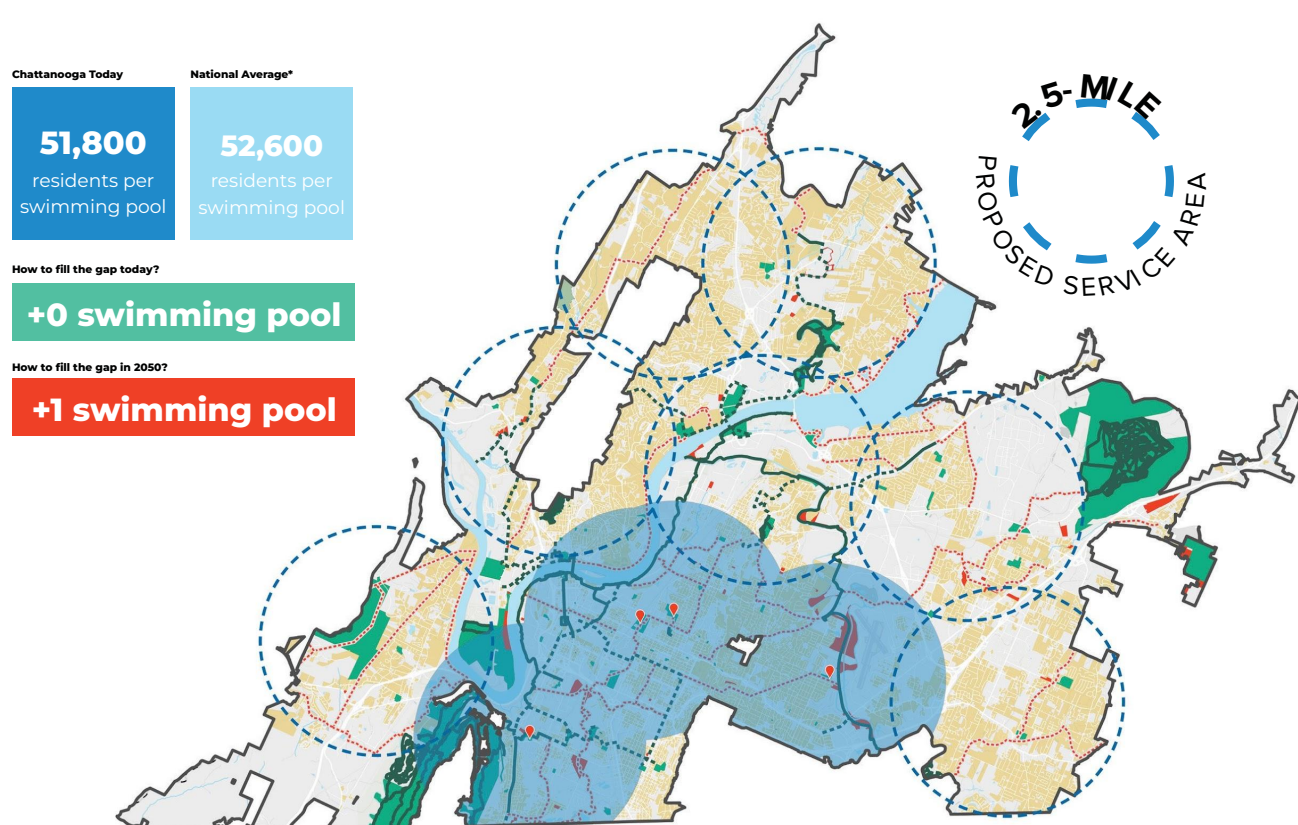
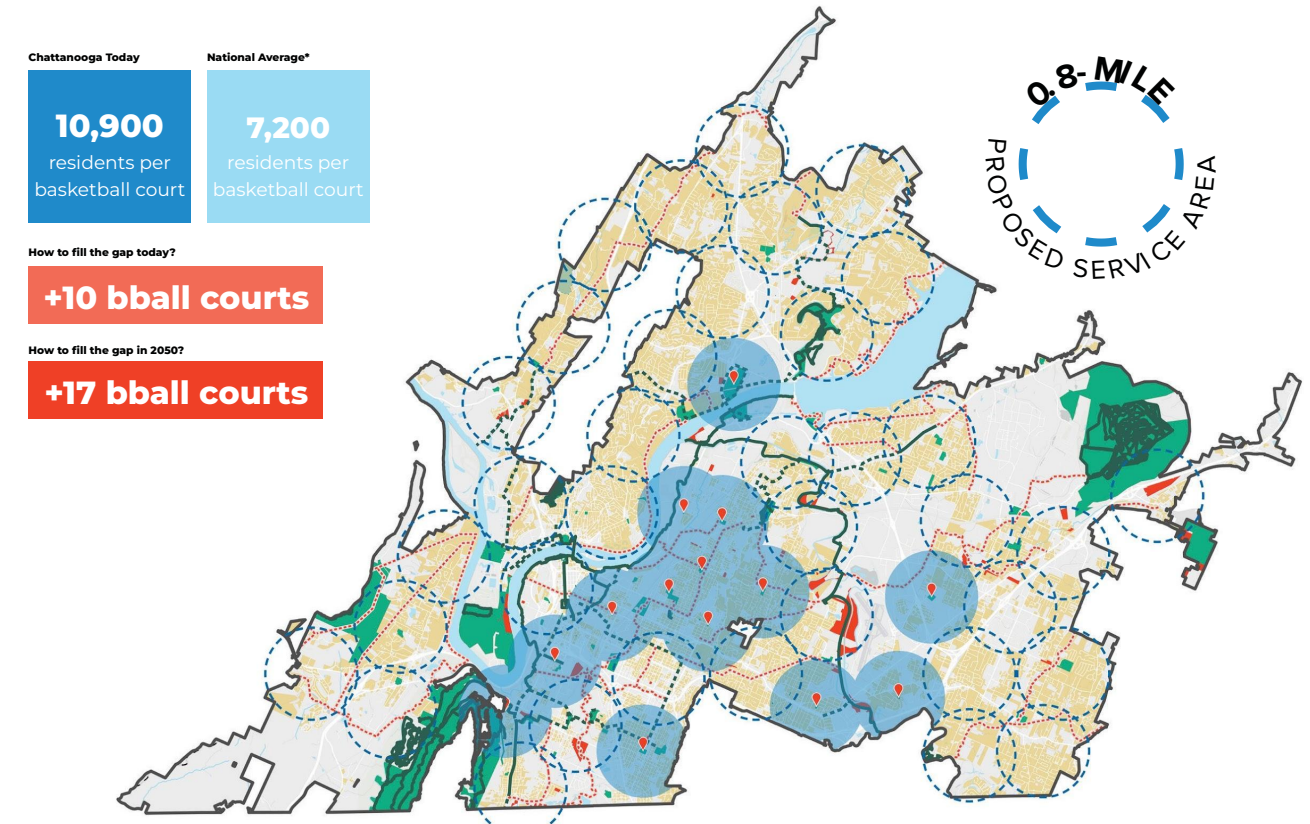
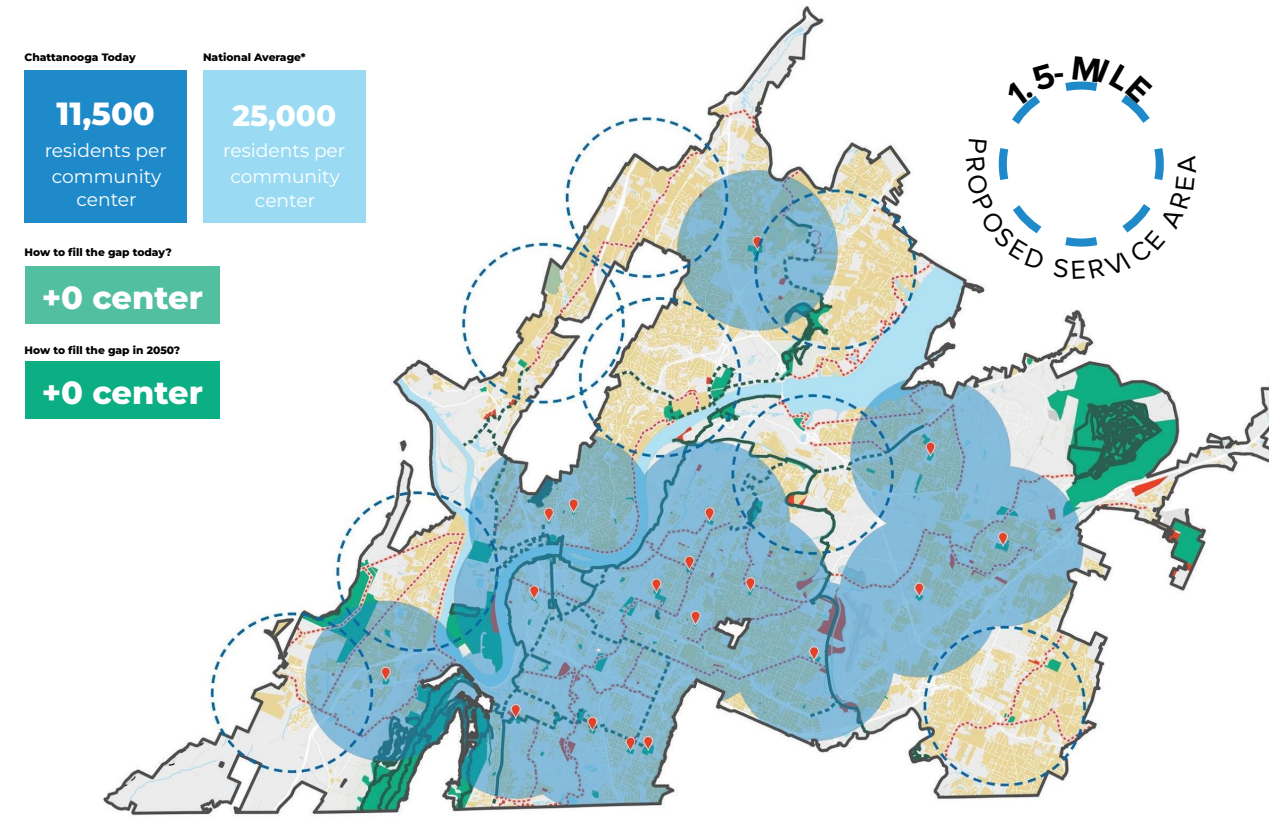
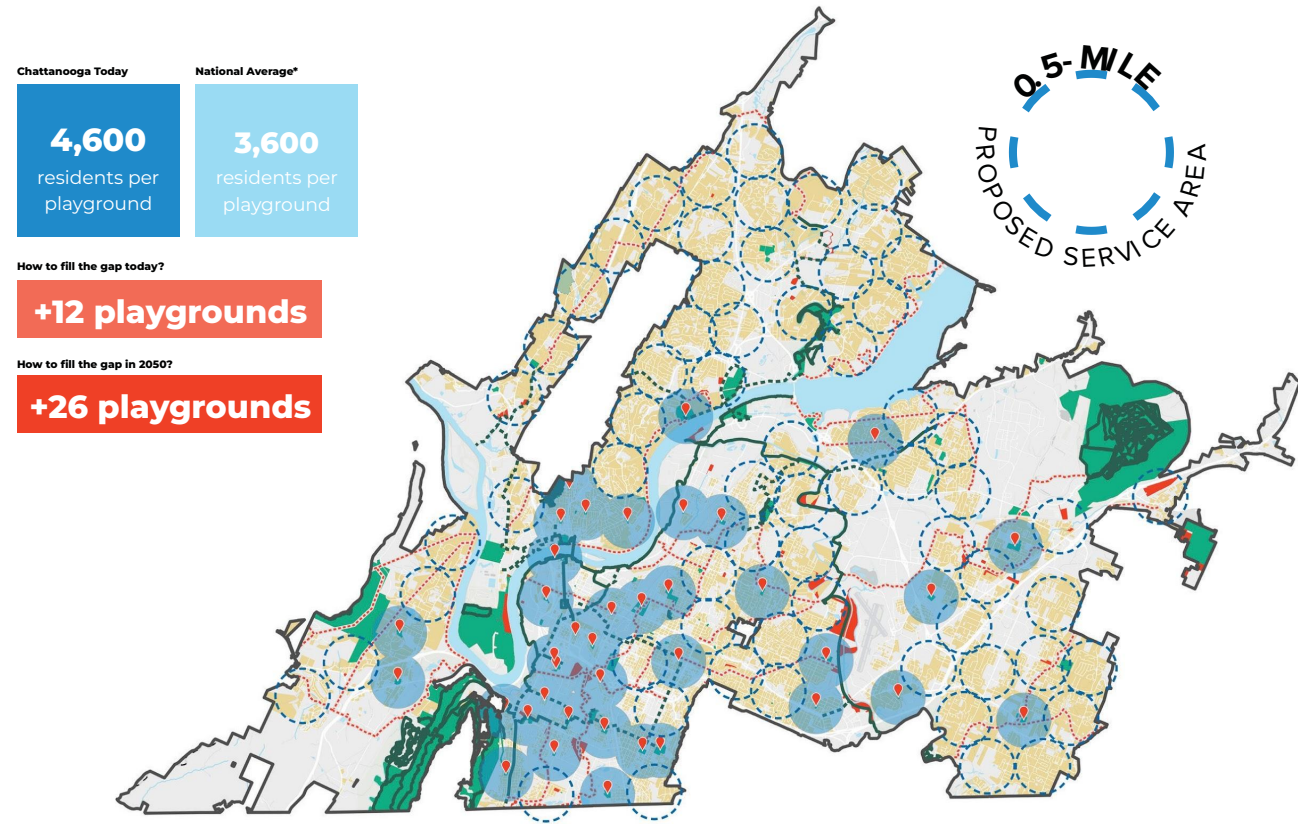
- 📍 Existing Parks
- 📍 Existing Trailheads
- Parkland
- 10-Minute Walkshed of Existing Parks and Trailheads
- Existing Trails
- - - Proposed Trails
- City Limits
- Roads
- + Railroads
- Waterbodies

35%
of Chattanoogaans
live within a
10-minute walk of a
park or trailhead

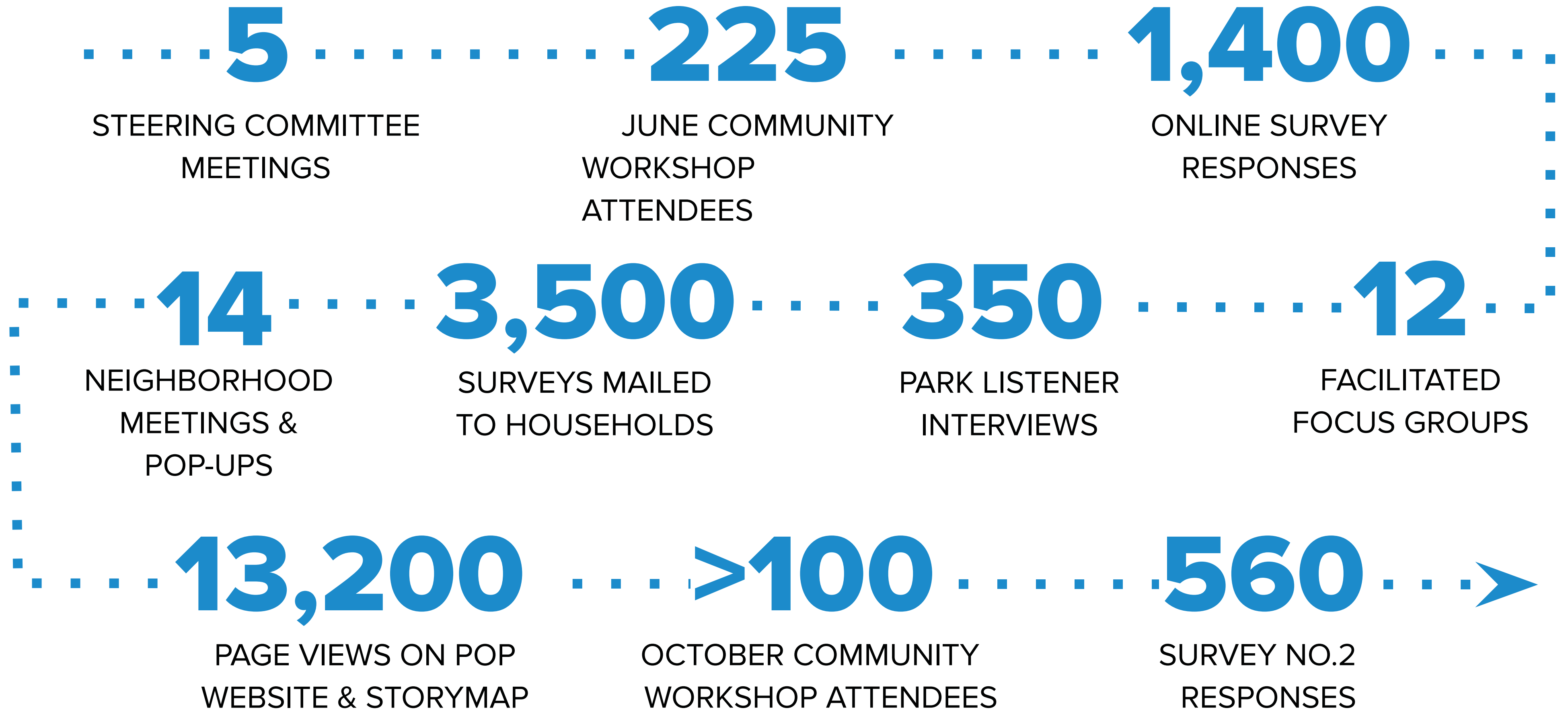
(compared to **55%** across the
14,000 cities and towns in the
TPL ParkServe database)

* City-owned parks
** Based on national median figures from National Recreation and Parks Association
*** Based on population projections from the Regional Planning Association

LEVEL OF SERVICE



PROCESS



PROCESS - WHAT WE HEARD...

I want every neighborhood to have a high-quality park, so we can meet our neighbors, play and be healthy.

The need for more and better kept parks is dire in Chattanooga. Nice natural areas shouldn't be restricted to those who can afford living on mountains.

I love the goal for every person to be within 10 minutes of a park. Keep it up!

Make a way for all people to maintain safe, quality, affordable housing next to quality parks.

Public ownership or preservation of steep scenic land on Big Ridge and critical flood lands.

That no matter the income of residents or the cost of houses in the areas...\$ is invested in parks equitably.

Keep nature in the forefront of all Planning.

100% accessible to people who are disabled and/or low income and don't have a car

Every child in the Chattanooga area could have a natural space, easily accessible to their family and neighborhood, to explore and enjoy nature.

As more and more of chatty gets developed I'd like to see our parks stay wild :)

Current Park Use

62%

of respondents use local parks at least several times per month

The three most popular uses are:



61%

Paved walking/biking trails



41%

Unpaved walking/biking trails



27%

Playgrounds

Current Park Barriers

What keeps you from using Chattanooga parks and outdoors more often?

Hard to find information	26%
Not enough parking	21%
Hard to reach by foot/bike	18%
Don't feel safe	17%
Not interested in current amenities/activities	16%
Activities/events aren't offered at convenient times	13%
Quality doesn't meet expectations	13%
Don't feel welcome	7%
Amenities/activities I want aren't affordable	7%

25-Year Vision

Thinking about how the POP could impact what Chattanooga's parks and outdoors look like in 25 years, what is most important to you?



50%

Environmental health, natural resources



48%

High-quality and connected greenways



48%

Residents' health and wellness



47%

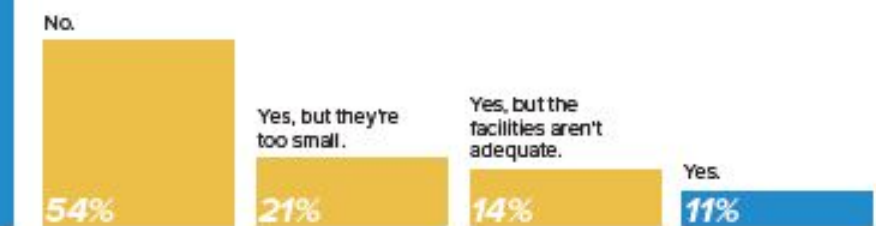
Neighborhood parks

Park Access

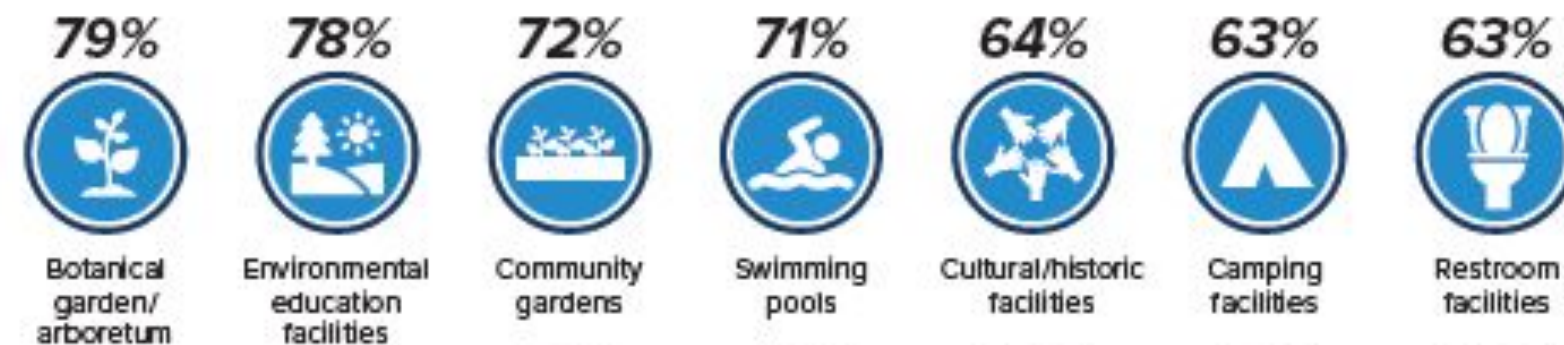
72%

of respondents can only reach their favorite park by car

Do you have sufficient parkland in your neighborhood?



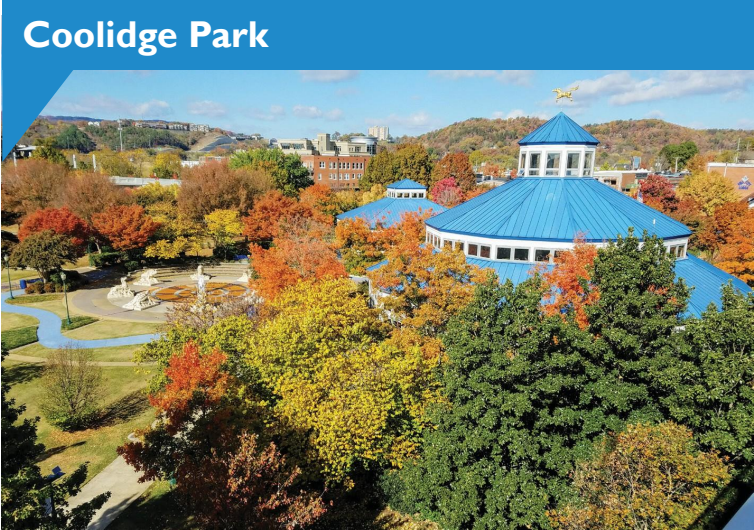
Most Needed Facilities (Percent of respondents who said Chattanooga has too little of the following amenities)



TYPES OF PARKS

Signature Park

Parks that are unique and serve the whole community in addition to tourists. These parks belong to everyone, bring people together at community-wide events, and promote economic development.



Preserve

Parks with protected natural scenery and unique features, with outdoor recreational opportunities and environmental benefits for people across the city and region.



Community Park

Parks that meet the day-to-day park and recreational needs of Chattanooga—with facilities such as community centers, play structures and sports fields that serve diverse needs and interests.



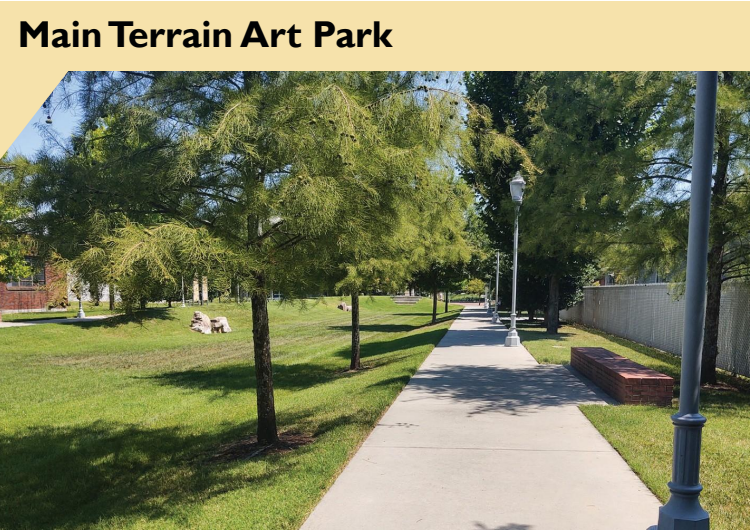
Neighborhood Park

Relatively small parks located in residential neighborhoods, with amenities selected and designed to reflect their neighborhoods' characteristics and needs.



Pocket Park

Parks that are tucked into urban or neighborhood contexts, offering passersby a break from their immediate surroundings and a place to engage with art, gardens or nature.



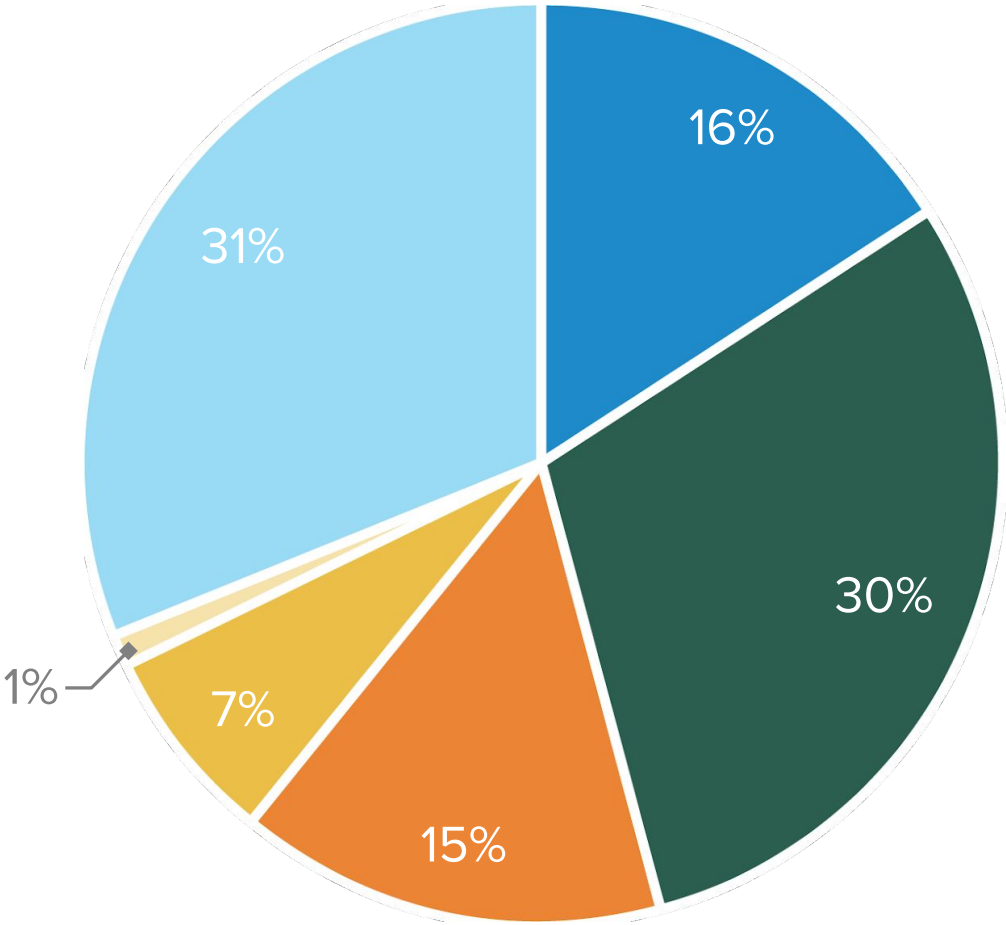
Special Facilities

Parks with amenities that serve specific types of recreational users from across the region—such as soccer teams, disc golf players and skateboarders.

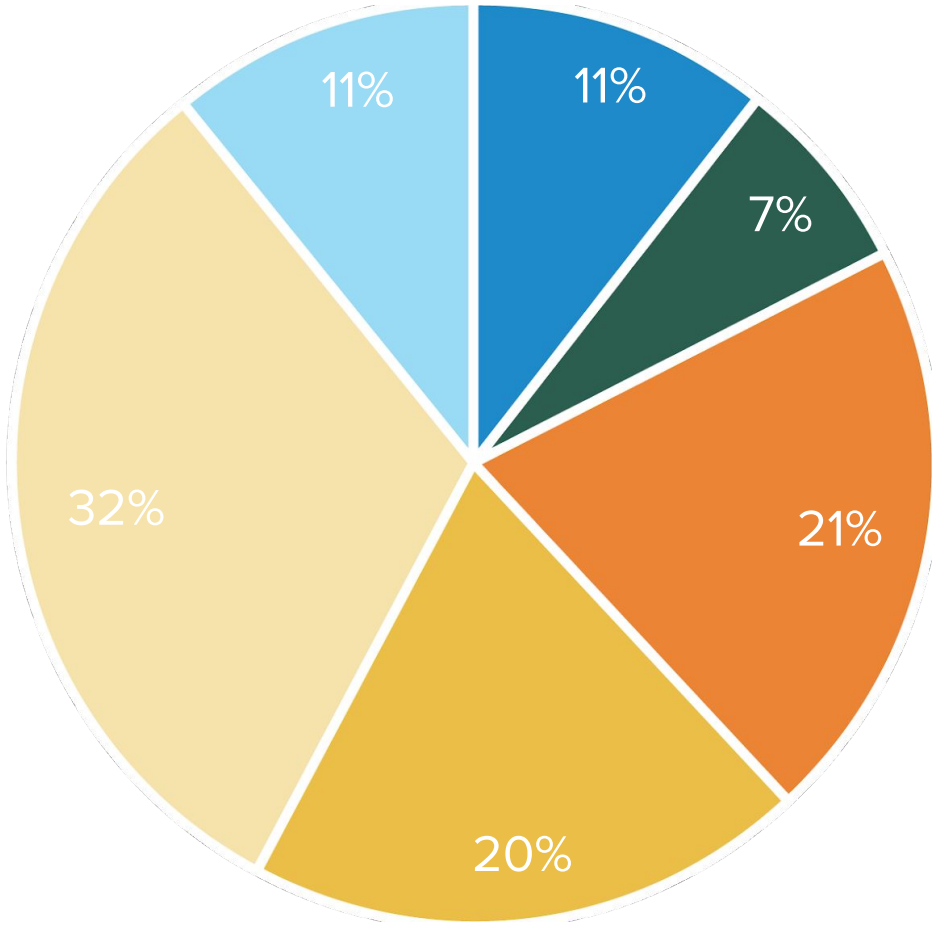


TYPES OF PARKS

Existing Parks by Type (Parkland Acreage)



Existing Parks by Type (Park Count)



- Signature Park Preserve
- Community Park
- Neighborhood Park
- Pocket Park
- Special Use Facilities

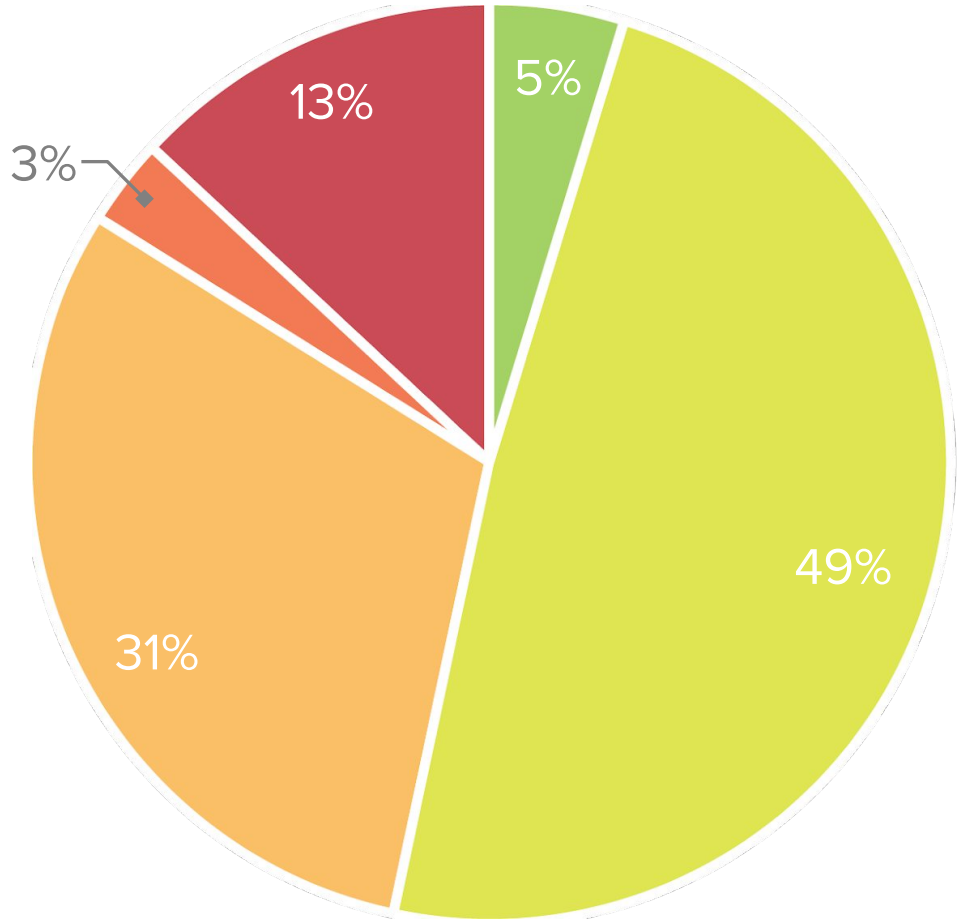
CONDITION OF PARKS

Quality and Condition of Park Facilities

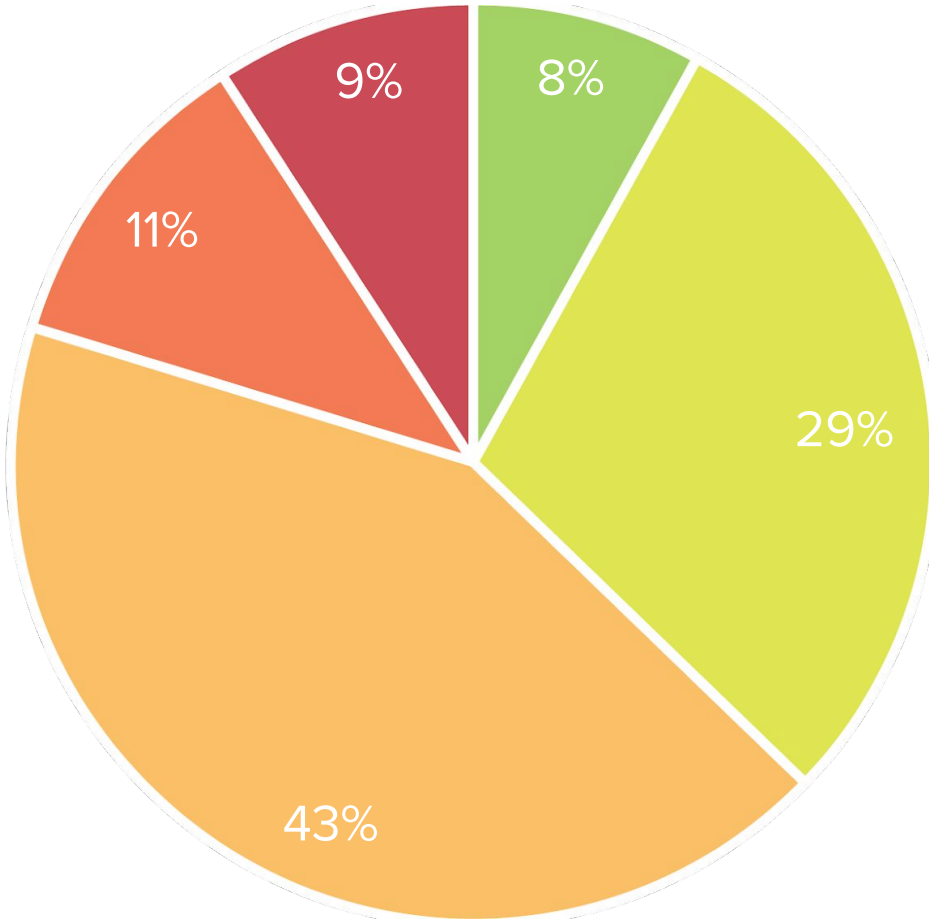


CONDITION OF PARKS

**Existing Parks by
Condition Rating
(Parkland
Acreage)**



**Existing Parks
by Condition
Rating (Park
Count)**



CONDITION OF PARKS

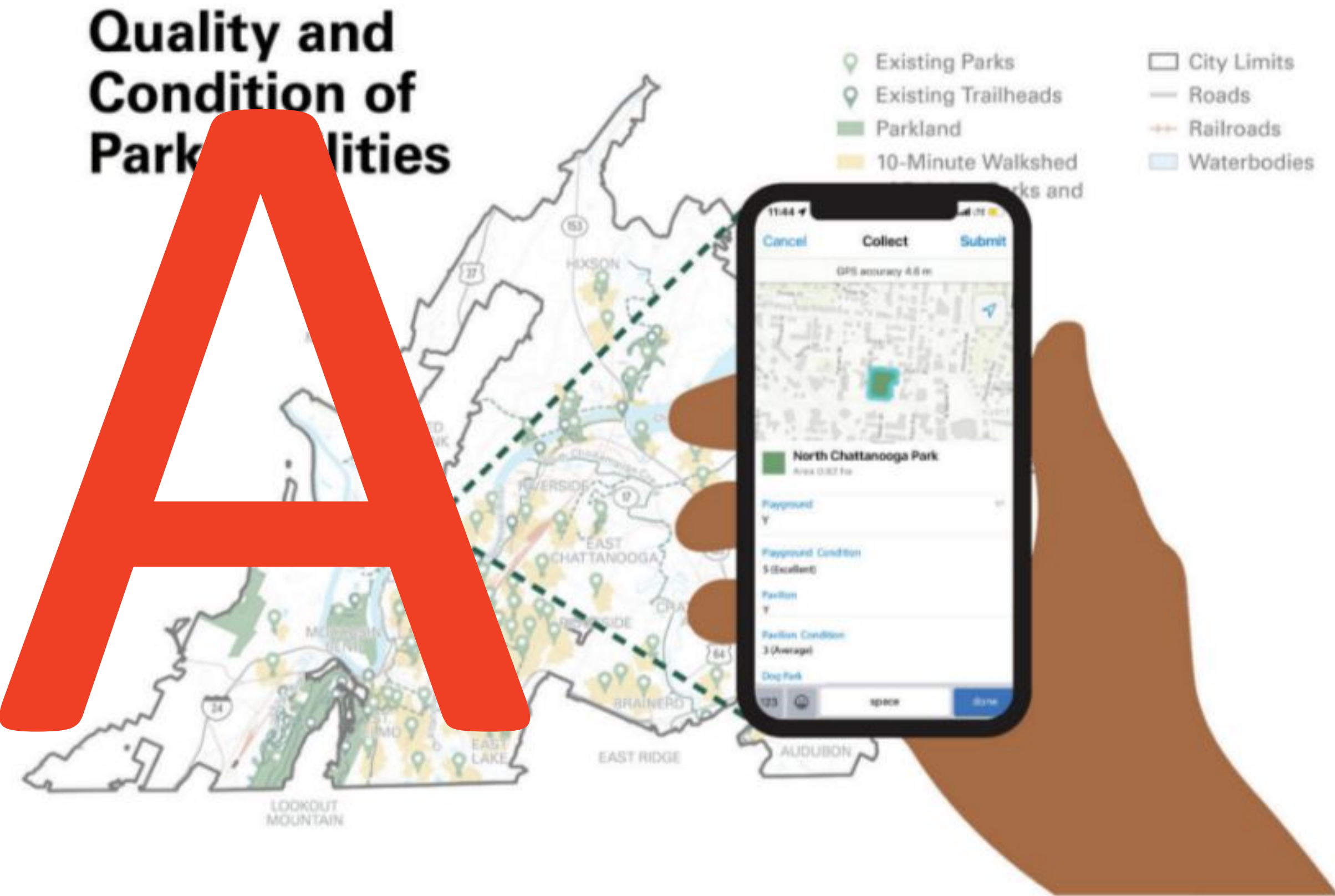
DRAFT



The planning team completed a field inventory and assigned condition ratings to parks and park assets.

CONDITION OF PARKS

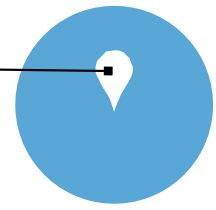
DRAFT



The planning team completed a field inventory and assigned condition ratings to parks and park assets.

NEIGHBORHOOD PARKS

Legend








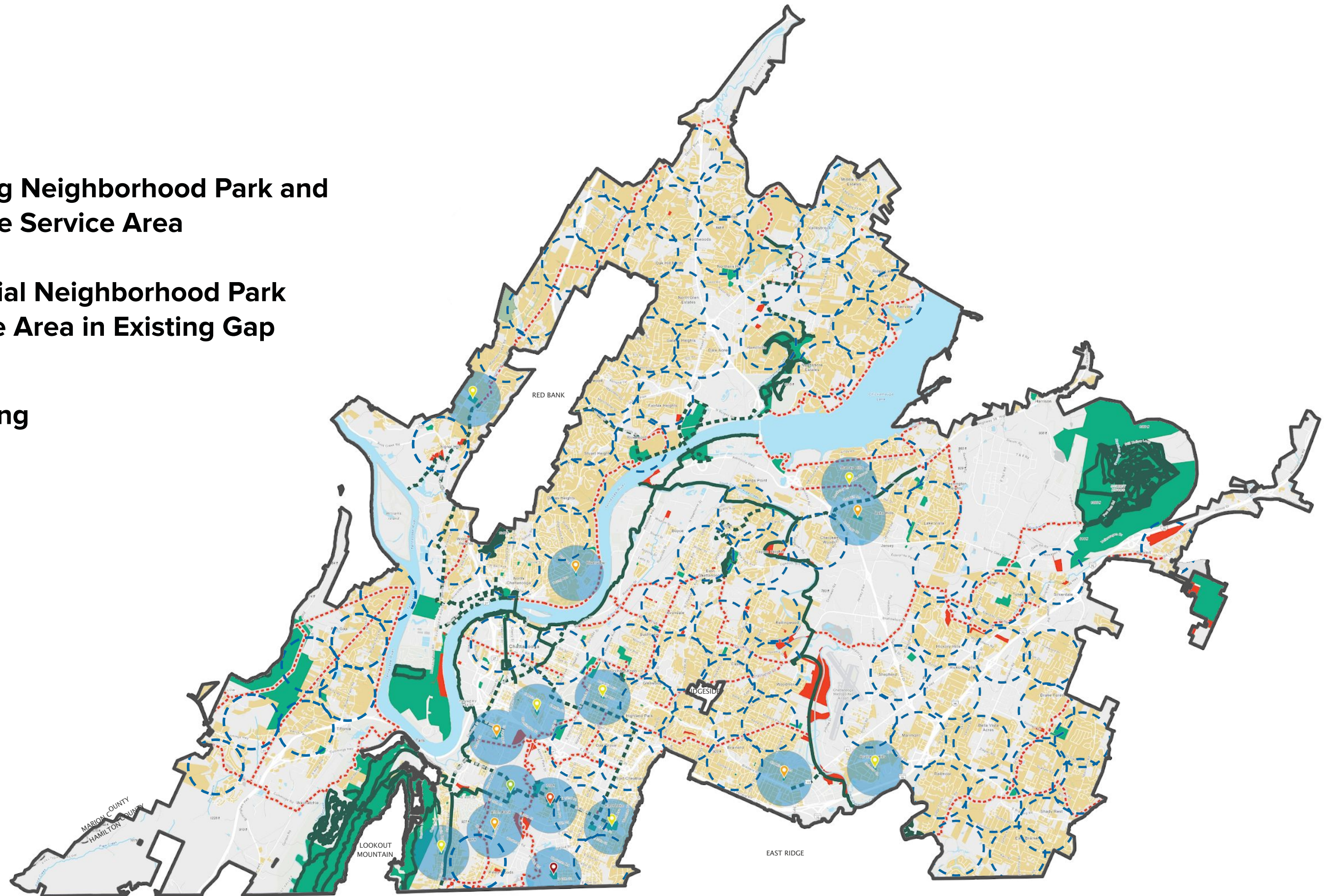
Existing Neighborhood Park and 1/2-Mile Service Area



Potential Neighborhood Park Service Area in Existing Gap

Existing Park Condition Rating

-  1 (Excellent Condition)
-  2
-  3
-  4
-  5 (Poor Condition)



GREENWAYS & NATURAL RESOURCES

21 miles
existing
trails

+

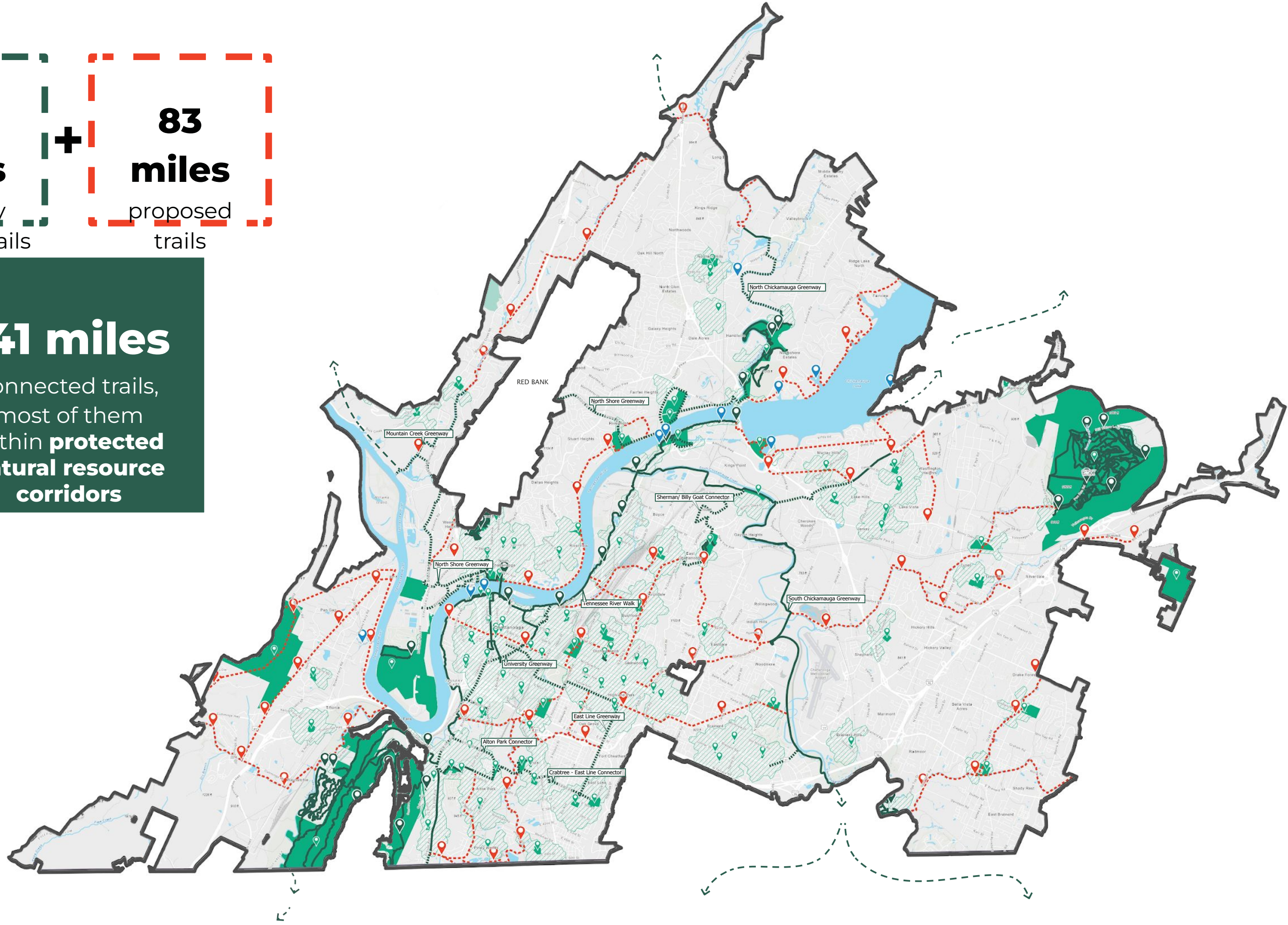
37 miles
currently
planned trails

+

83 miles
proposed
trails

=

141 miles
connected trails,
most of them
within **protected
natural resource
corridors**



POP VISION & BIG IDEAS

POP VISION STATEMENT

**Chattanooga will be a ‘city in a park,’
where all residents have just and equitable
access to
breathtaking natural scenery, clean and
beautiful waterways, iconic downtown parks,
authentic and welcoming neighborhood parks,
and an
interconnected greenway and blueway trail
system
that stitches them all together.**

POP PRINCIPLES



EQUITY



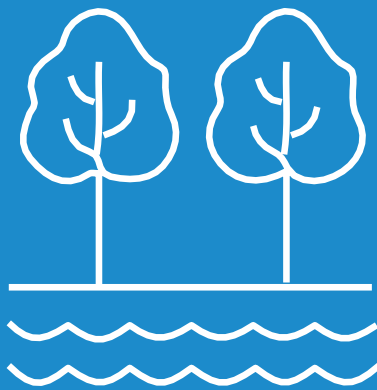
QUALITY



ACCESS



PLACE



NATURE



Create an equitable parks and outdoors system

Big Ideas

- Prioritize system improvements in areas of the city with a history of underinvestment in parks and other public services.
- Locate parks and open space to address the city's brownfield legacy—transforming contaminated sites and eyesores into high-quality, community-serving public parks.
- Incorporate anti-displacement strategies in park design and engagement processes.
- Create a parks advisory board to build institutional knowledge, reflect public values and ensure equity in park decision-making.

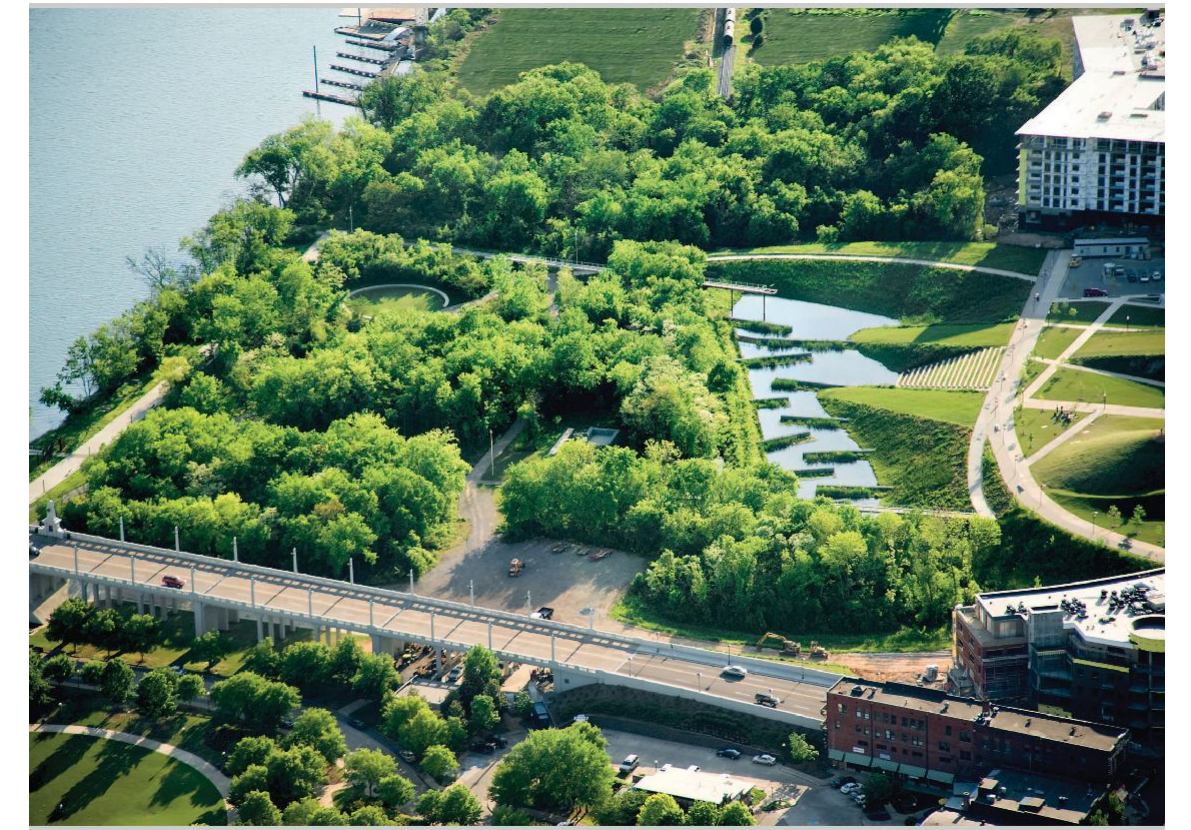




Set a citywide standard for high-quality parks

Big Ideas

- Implement design guidelines to ensure that park spaces and programming are safe and universally accessible.
- Implement design guidelines to ensure that all parks meet minimum standards by type for quality, amenities and maintenance.
- Create a sustainable funding source to ensure all existing and future parks are adequately maintained and replenished over time.

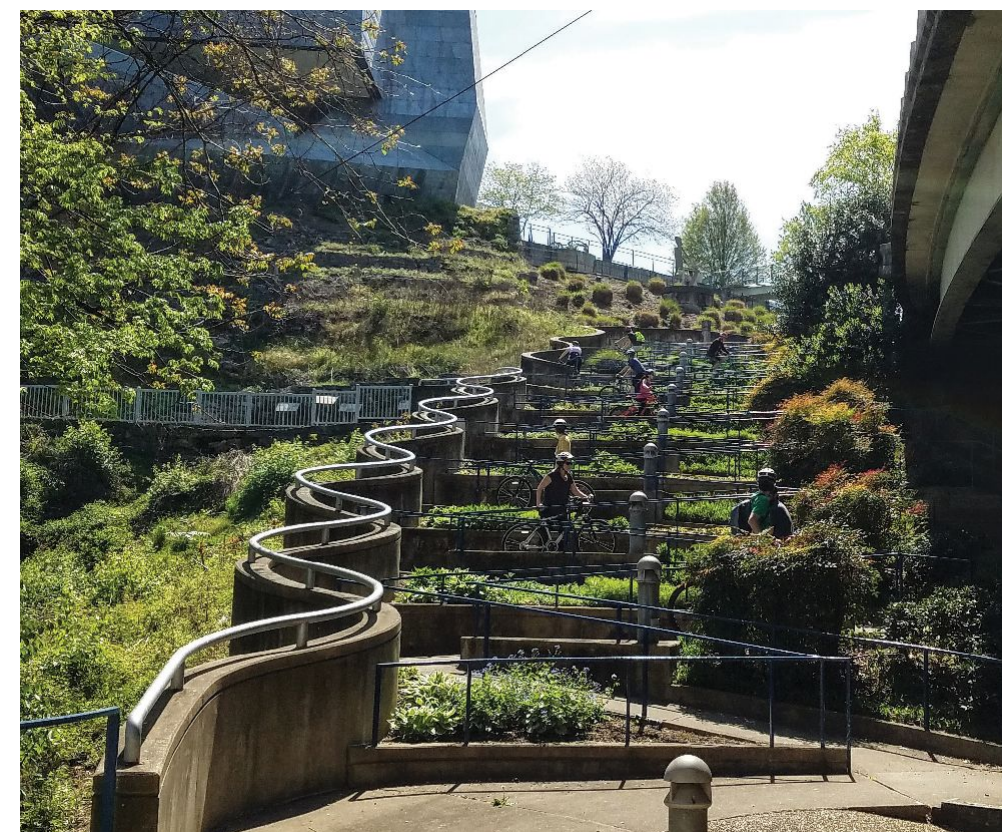




Ensure access and eliminate barriers

Big Ideas

- Work with community-based partners to expand park and outdoor recreation programming, with the goal of reaching diverse new audiences and eliminating barriers to use.
- Create a 'Safe Routes to Parks' program that creates equitable sidewalk, bike lane and transit connections to parks.
- Build connections between the City's park and outdoor system and national and state parks, Tennessee Valley Authority lands, and regional and national trail systems.

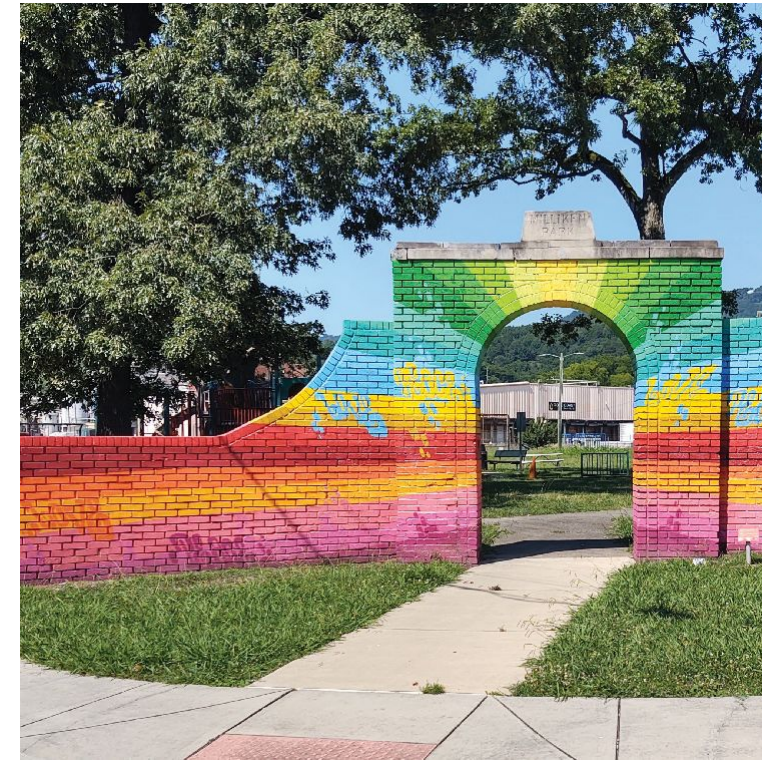




Amplify local character and sense of place

Big Ideas

- Launch a neighborhood park design initiative to ensure that every community has at its heart a neighborhood park that is authentic to place and serves neighbors' day-to-day recreational, social and wellness needs.
- Celebrate and protect Chattanooga's cultural landscapes—particularly those that have been underrecognized—as a framework of the plan.
- Comprehensively view as park and recreational space the entire public realm—parks, open space, public streets and rights-of-way, urban plazas, even rooftops.

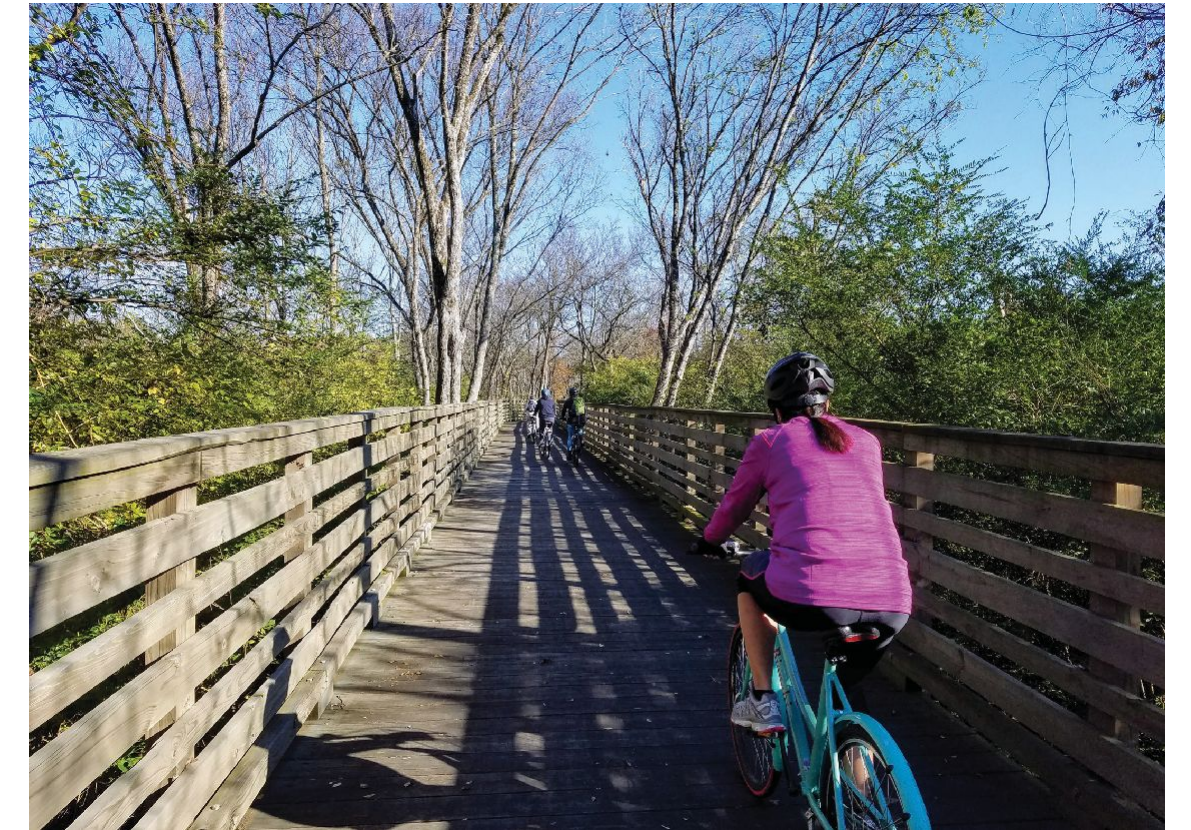




Celebrate and protect our natural resources

Big Ideas

- Celebrate and protect Chattanooga's timeless geographic and natural features as a framework of the plan.
- Integrate the plan with other citywide resilience and stormwater initiatives—Chattanooga parks are green infrastructure.
- Approach City park projects within the planning and ecological framework of the 16-county regional THRIVE network.
- Utilize land planning and tools such as zoning and ordinances to dedicate new parkland and protect important ecological resources.



TOP OF THE POP

- 1** **Initiate a neighborhood park initiative** to upgrade existing parks, add new parks to serve underserved populations, setting aside land in anticipation of population growth and development
- 2** Continue to invest in Signature Parks **as essential for Chattanooga's regional economy and iconic identity.**
- 3** **Build safe greenways and trailheads** to put 55% of residents within a 10-minute walk of the park and outdoor system
- 4** Sustain **healthy urban ecological systems** and protect our **shared cultural landscapes and stories.**
- 5** Make rapid targeted improvements and create partnerships that **improve the quality of, and activity in, existing parks** serving our most vulnerable communities and residents.
- 6** Dedicate adequate resources to care for high quality public parks that are well-loved, well-used, and **excellently maintained.**

DRAFT

POP VISION PLAN

VISION STATEMENT

Chattanooga will be a 'city in a park,' where everyone enjoys just and equitable access to breathtaking natural scenery and rich cultural landscapes; iconic signature parks; authentic and welcoming neighborhood parks; the urban ecology benefits of beautiful landscapes, climate resilience, wildlife habitat, human comfort and wellness, and citywide air and water quality; and a greenway and blueway system that knits the whole city together.

This plan shows the 50-year vision for Chattanooga's parks and outdoors—the physical improvements, additions and expansions that will bring the POP's vision statement to life.

NEW GREENWAYS & BLUEWAYS

Across geographies and demographic groups, Chattanooga loves their greenways and want more of them. They also value the park and outdoor system's role in protecting and restoring the city's natural environment.

By following streams, rivers and ridges wherever possible, the proposed greenway and blueway corridors achieve both goals—creating new citywide recreation and connectivity while preserving and linking natural resource corridors.

The POP proposes high-level greenway corridors, not alignments. More detailed study is needed to determine alternate locations and to pinpoint the best opportunities for land conservation and public access.

NEIGHBORHOOD PARK PROJECTS

Chattanooga also sees neighborhood parks as essential in their long-term vision for parks and outdoors. These parks bring neighbors together and meet the day-to-day social and recreational needs of their communities.

There are big disparities in the quality and condition of Chattanooga's neighborhood parks, and many Chattanoogaans don't have a neighborhood park to call their own.

The POP proposes significant improvements to existing City parks, to bring all parks to a high standard of quality and ensure they serve as well-loved neighborhood parks.

The POP also proposes 34 new parks in those areas of the city with parkland gaps. To suit the city's diverse development contexts, the goal is to provide a park within a 10-minute walk of residents in Chattanooga's Urban Overlay zone, and within a 15-minute walk for all other parts of the city.

NEW FACILITIES

Nineteen major new facilities are proposed based on public feedback and national and peer-city metrics for facilities per population. This list reflects what the planning team heard from the community—what they want and what Chattanooga lacks—and positions the city to maintain or improve its population-based level of service through at least 2050.

Other smaller facilities—such as playgrounds, picnic pavilions, basketball courts, restrooms and single playfields—will be added systemwide as part of neighborhood park development and based on the needs of specific communities.

NEW PARKLAND

The POP proposes 6,200 acres of new parkland dedicated by the City and its partners. The City has dedicated 870 acres of vacant land identified by the planning team for new developed parks, natural resource protection and passive recreation. This puts a significant dent in the amount of new parkland the city needs for system expansion and to realize the community's vision of a 'city in a park.'

The Opportunity Sites map in this chapter calls out additional parkland opportunities, both public and private. More parkland opportunities will become available as part of future development, public-private partnerships and ongoing land conservation efforts.

27 NEW GREENWAYS

Chattanoogaans are connected to each other and to a healthy natural environment.

- 1 Black Creek Greenway
- 2 Lookout Valley Connector
- 3 Lookout Creek Greenway
- 4 Westside Connector
- 5 University Greenway
- 6 Alton Park Connector
- 7 Chatta Creek Greenway
- 8 Crabtree-East Line Connector
- 9 Dobbs Branch Greenway
- 10 East Line Greenway
- 11 East Chatta Connector
- 12 Citico Creek Greenway
- 13 Brainerd Connector
- 14 Sherman-Billy Goat Connector
- 15 Murray Hills Connector
- 16 Washington Hills Connector
- 17 Poe Branch Greenway
- 18 Friar Branch Greenway
- 19 Mackey Branch Greenway
- 20 Ryall Springs Greenway
- 21 Riverwalk East Extension
- 22 Mountain Creek Greenway
- 23 North Shore Riverwalk
- 24 North Shore Greenway
- 25 Ninemile Branch Greenway
- 26 North Chick Extension
- 27 North Chickamauga Greenway

34 NEW PARKS

Every community has an authentic and welcoming neighborhood park.

- 1 West Ridge Park
- 2 Black Creek Park
- 3 Brown's Ferry Park
- 4 St. Elmo Nature Park
- 5 Cedar Hill Park
- 6 Dodds Park
- 7 South Downtown Park
- 8 Lincoln Park
- 9 Provence Street Park
- 10 Shallowford Park
- 11 South Chick Park
- 12 Airport Park
- 13 Brookside Park
- 14 Friar Branch Park
- 15 Ashwood Park
- 16 Hickory Valley Park
- 17 Concord Park
- 18 Audubon Park
- 19 Ryall Springs Park
- 20 Elmwood Park
- 21 Crescent Park
- 22 Stuart Heights Park
- 23 Lupton Mill Park
- 24 Walden Ridge Park
- 25 Browntown Park
- 26 Oak Hill North Park
- 27 Northgate Park
- 28 Dayton Park
- 29 North Village Park
- 30 Creek Farm Park
- 31 Valleybrook Park
- 32 Fairview Park
- 33 North Shore Park
- 34 Creekside Park

19 NEW FACILITIES

Chattanoogaans' recreational needs are met now and in the future.

- 1 Botanical Garden
- 1 Aquatic Facility
- 1 Pickleball Complex
- 1 Ball Diamond Complex
- 1 Whitewater Park
- 2 Multi-Use Field Complexes
- 2 Community Centers
- 2 Disc Golf Courses
- 2 Outdoor Adventure Parks
- 3 Skate Parks
- 3 Customer Service and Maintenance Facilities

870 ACRES NEW PARKLAND

The City of Chattanooga makes a down payment on its park and outdoor investments by protecting City-owned sites as dedicated open space and parkland.

50 PARK REINVESTMENT PROJECTS

Existing parks are improved or developed to meet their communities' needs.

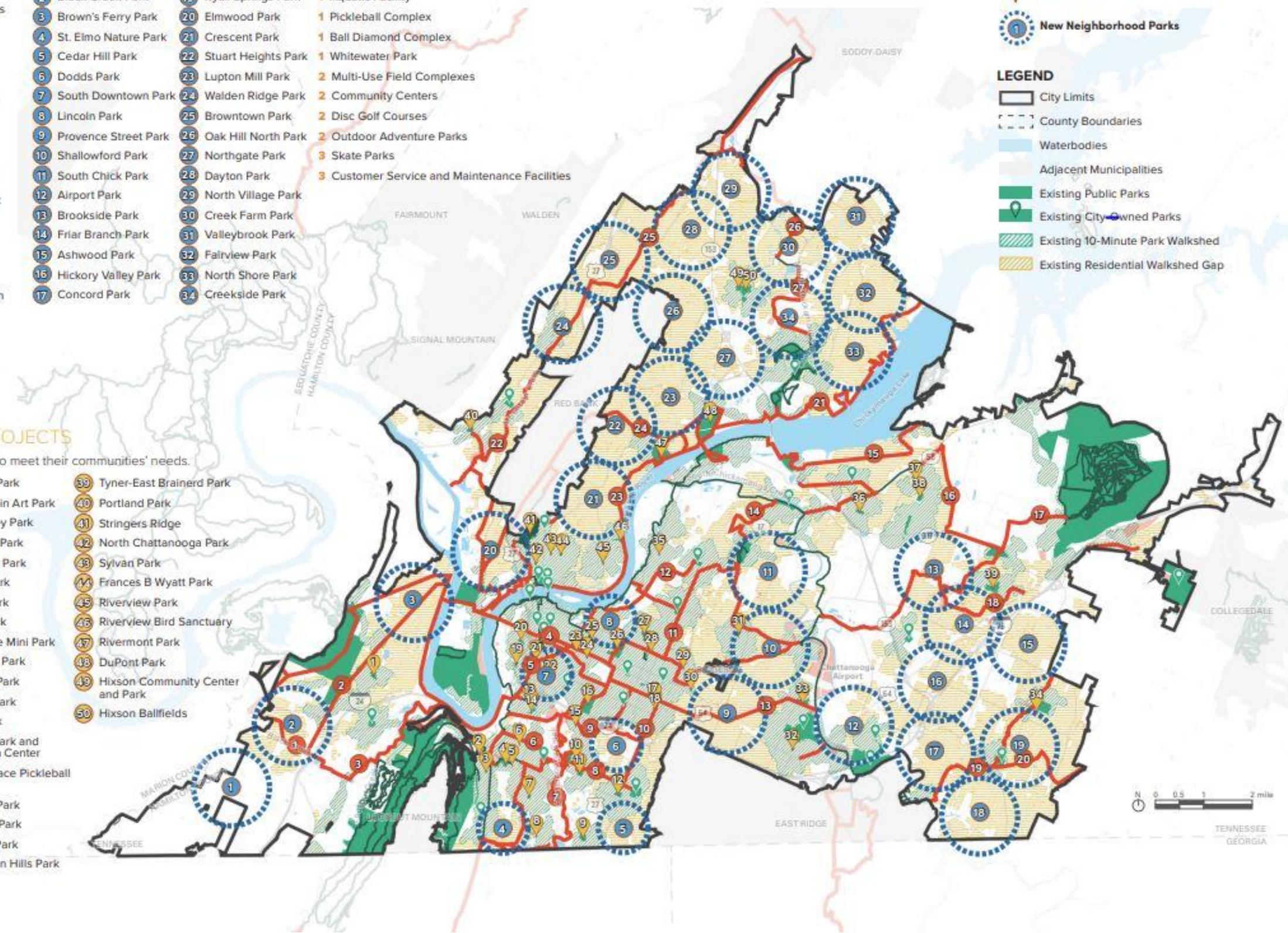
- 1 Lookout Valley Park
- 2 Church Street Park
- 3 Roy Nelms Park
- 4 South Chattanooga Park
- 5 Fredrick Park
- 6 Delong Park
- 7 Milliken Park
- 8 Piney Woods
- 9 Boulevard Park
- 10 Clifton Hills Park
- 11 Caruthers Park
- 12 East Lake Recreation Center
- 13 Pringle Park
- 14 Harris Johnson Park
- 15 Park City Park
- 16 Montague Park
- 17 Watkins Street Park
- 18 Ridgedale Safewalk
- 19 Chew Chew Canine Park/Chattown Skatepark
- 20 Westside Park
- 21 Main Terrain Art Park
- 22 Fort Negley Park
- 23 Whiteside Park
- 24 Park Place Park
- 25 Perkins Park
- 26 Warner Park
- 27 Carver Park
- 28 Churchville Mini Park
- 29 Glenwood Park
- 30 Overlook Park
- 31 Eastdale Park
- 32 Tacoa Park
- 33 Brainerd Park and Recreation Center
- 34 Batter's Place Pickleball Courts
- 35 Riverside Park
- 36 Lake Hills Park
- 37 Lakeside Park
- 38 Washington Hills Park
- 39 Tyner-East Brainerd Park
- 40 Portland Park
- 41 Stringers Ridge
- 42 North Chattanooga Park
- 43 Sylvan Park
- 44 Frances B Wyatt Park
- 45 Riverview Park
- 46 Riverview Bird Sanctuary
- 47 Rivermont Park
- 48 DuPont Park
- 49 Hixson Community Center and Park
- 50 Hixson Ballfields

POP PROPOSED PROJECTS

- 1 New Greenway Corridors
- Existing Park Improvement Projects
- 1 New Neighborhood Parks

LEGEND

- City Limits
- County Boundaries
- Waterbodies
- Adjacent Municipalities
- Existing Public Parks
- Existing City-Owned Parks
- Existing 10-Minute Park Walkshed
- Existing Residential Walkshed Gap



DM	Deferred Maintenance on All Existing Park Amenities
EPI	Batter's Place Pickleball Courts
EPI	Boulevard Park
EPI	Caruthers Park
EPI	Carver Park
EPI	Chattanooga Skate Park
EPI	Clifton Hills Park
EPI	DeLong Park
EPI	DuPont Park/ North River Field Complex
EPI	Glenwood Park
EPI	Harris Johnson Park
EPI	Lakeside Park
EPI	Milliken Park
EPI	Montague Park
EPI	Piney Woods
EPI	Sheila Jennings - Westside Park
EPI	South Chattanooga Park
EPI	Stringers Ridge
EPI	Watkins Street Park
EPI	Whiteside Park
NB	South Chickamauga Creek
NB	Tennessee River
NF	Disc Golf Course 1
NF	Multi-Use Field Complex 1
NF	Pickleball Complex
NF	Sports and Recreation Customer Service Center (Warner)
NP	Airport Park
NP	Provence Street Park
NP	Friar Branch Park
NP	Lincoln Park
NP	Northgate Park
NP	Ryall Springs Park
NT	Alton Park Connector
NT	Crabtree-East Lake Connector
NT	East Line Greenway
NT	Mackey Branch Greenway
NT	Ryall Springs Greenway
NT	University Greenway

PHASE 1 (THE 10-YEAR PLAN)

PROJECT TYPE	COUNT	ESTIMATED COST
Greenway Corridors	16 miles of new greenway trails and connectors	\$32 million
New Neighborhood Parks	6 new neighborhood parks	\$27 million
Park Reinvestment Projects	19 park upgrade or redevelopment projects plus deferred maintenance for all parks	\$35 million
Special Use Facilities	4 new facilities	\$7 million
Blueway Amenities	new amenities along 28 miles of paddle trail	\$1 million
TOTAL PHASE 1 COST		\$102 MILLION

PHASE 2 (THE 25-YEAR PLAN)

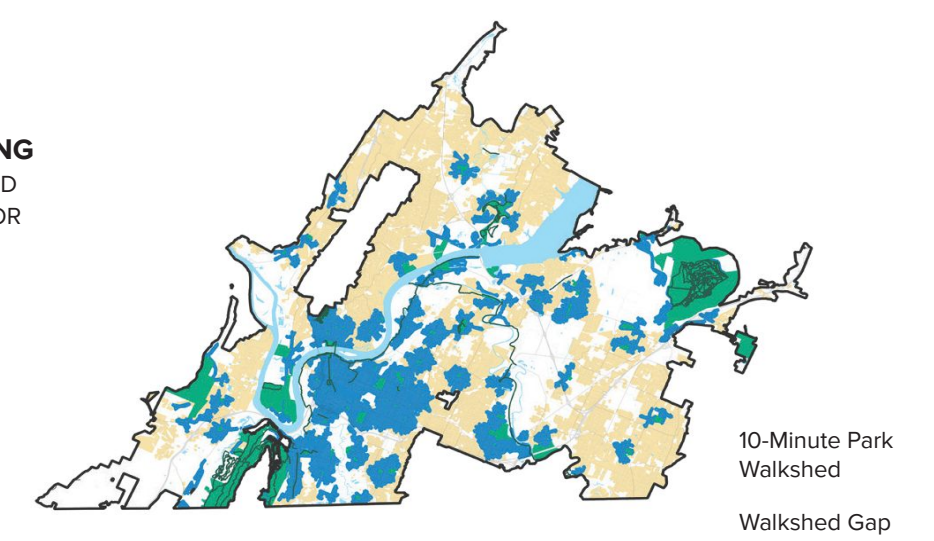
PROJECT TYPE	COUNT	ESTIMATED COST
Greenway Corridors	31 miles of new greenway trails and connectors	\$62 million
New Neighborhood Parks	9 new neighborhood parks	\$54 million
Park Reinvestment Projects	31 park upgrade or redevelopment projects	\$38 million
Special Use Facilities	8 new facilities	\$33 million
Blueway Amenities	new amenities along 16 miles of paddle trail	\$2 million
TOTAL PHASE 2 COST		\$189 MILLION

PHASE 3 (THE 50-YEAR PLAN)

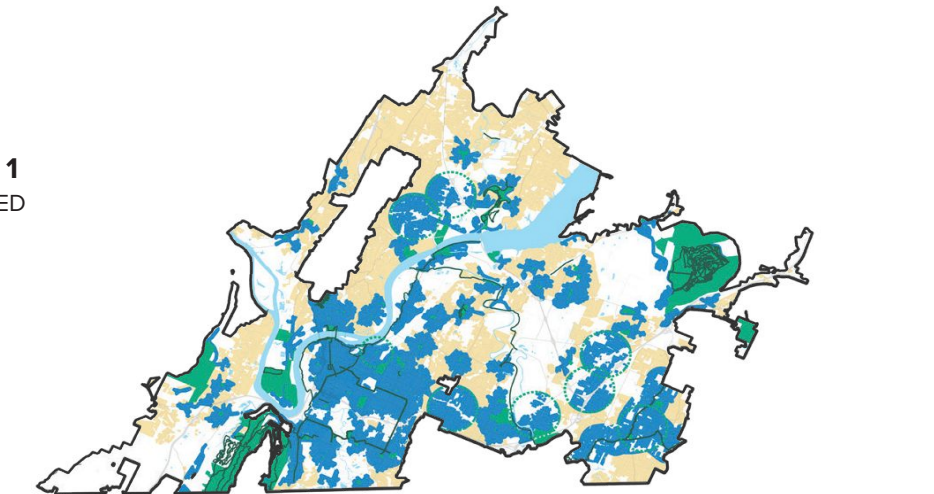
PROJECT TYPE	COUNT	ESTIMATED COST
Greenway Corridors	71 miles of new greenway trails and connectors	\$142 million
New Neighborhood Parks	18 new neighborhood parks	\$108 million
Special Use Facilities	6 new facilities	\$25 million
Blueway Amenities	new amenities along 8 miles of paddle trail	\$1 million
TOTAL PHASE 3 COST		\$276 MILLION

PROJECT TYPE	PRIORITIZATION CRITERIA									
	EQUITY	ACCESS	QUALITY	PLACE	NATURE	COMMUNITY DEVELOPMENT	LEVEL OF SERVICE	FEASIBILITY	NUMBER SERVED	PUBLIC SUPPORT
Greenway Corridor	●	●						●	●	●
Park Reinvestment Project	●		●	●	●	●				
New Park	●	●		●		●				
New Facilities							●			●
Blueway Amenities	●									●

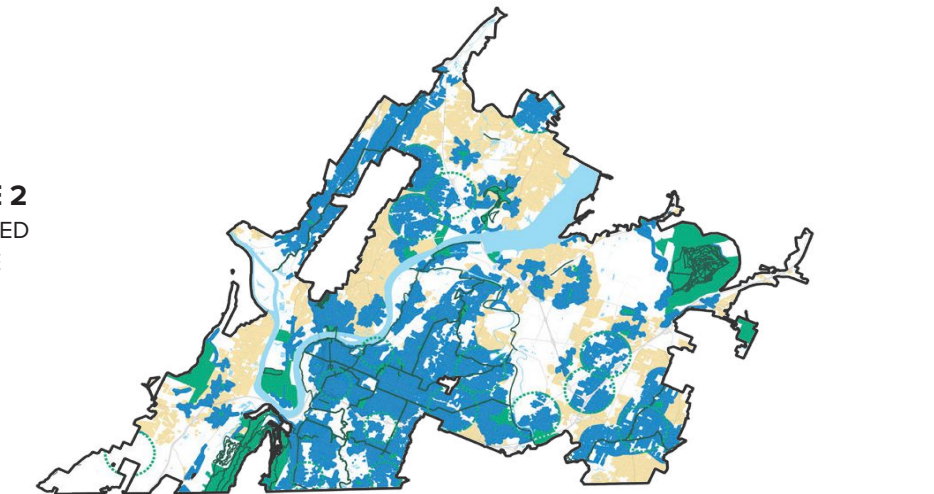
EXISTING
PARK AND
OUTDOOR
SERVICE
AREA



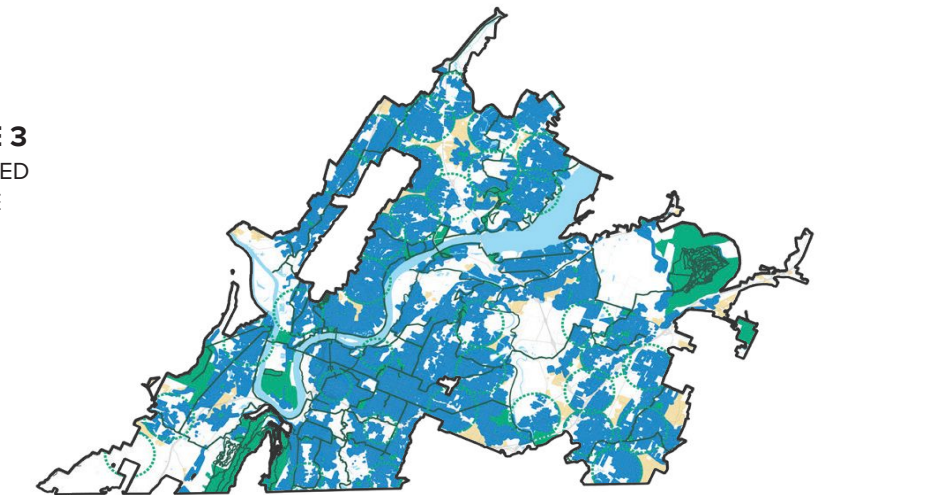
PHASE 1
EXPANDED
SERVICE
AREA



PHASE 2
EXPANDED
SERVICE
AREA



PHASE 3
EXPANDED
SERVICE
AREA



WRAP UP

WHAT'S NEXT?

- **April 11**
Full Plan goes live on website
- **April 22**
Earth Day
- **April 24**
Plan goes before Council for adoption
- **May 4th**
National Park City Kickoff
- **June - August**
Council stands up Park Commission

Visit the project website for updates:

www.ChattanoogaParksandOutdoorsPlan.com

WHAT IS YOUR

VISION

FOR CHATTANOOGA'S PARKS AND OUTDOORS?



Learn more about the state of Chattanooga's parks and outdoors and
take the online survey: www.chattanoogaparksandoutdoorsplan.com

